

HydraPULL

MK1085 Hydraulic Bundle Extractor



- Portable
- Operates in push or pull mode
- 10,000 psi operating pressure
- Bundle handling device required



Bundle Opposite HydraPULL

HydraPULL Assembled On Exchanger

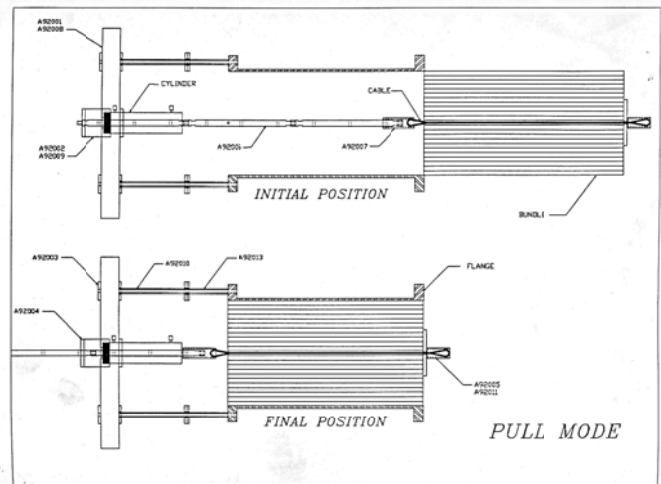
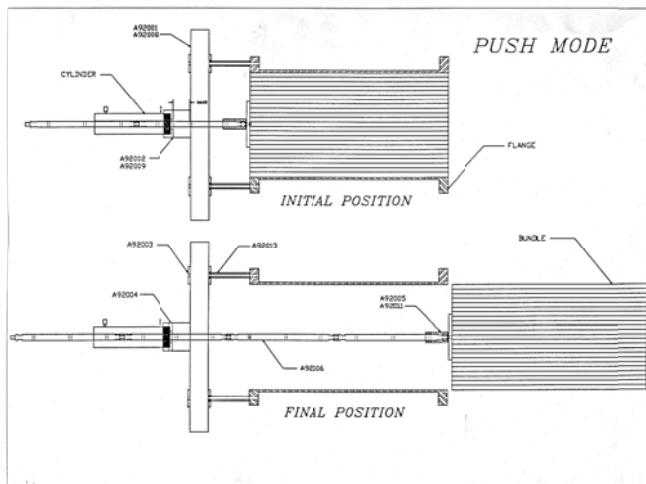


The HydraPULL is built around a 50-ton capacity cylinder for use on exchangers up to twenty (20) feet. Each unit is manufactured to the customer's order according to client designated specifications within the plant to meet their particular exchanger, or range of exchanger requirements.

Each unit is furnished with adjustable mounting apparatus consisting of a bridge on which the cylinder is mounted, and to which the bridge extensions are attached. Push rod extensions are supplied in convenient lengths for use on tube bundles from 3 to 20 feet.

MK1085 Capacity:

ITEM	IMPERIAL	METRIC
Hydraulic Cylinder	50 tons	45 tons
Minimum Exchanger Diameter	20 inches	508 millimeters
Maximum Exchanger Diameter	60 inches	1.52 meters
Maximum Exchanger Length	20 feet	6.10 meters
Maximum Stroke of Cylinder	6 inches	152 millimeters
Maximum Push/Pull Length	20 feet	6.10 meters



Visit the FASTORQ YouTube Channel to see videos about more of our tools:
<http://www.youtube.com/user/FASTORQ>
 Or visit our website: <http://www.fastorq.com/resources/video-library/>
 Videos are available in English, Spanish, Portuguese and Russian languages